



SMARTer Network
Draft Recommended Network
Presentation to Elected Officials
March 17 & 21, 2025



Today's Agenda

- **Welcome and Introductions**
 - Harmony Lloyd,
SMART VP of Planning and Innovation
- **SMARTer Mobility Program Overview**
 - Aarion Franklin, Project Manager, Michael Baker Intl.
 - Amy Wiles, Engagement Lead, E. Holdings, Inc.
- **Q&A Session**



Housekeeping

- Post questions using the Q&A function at any time, we will answer them during the Q&A session at the end.
- This session is being recorded.
- Closed captioning is available.



What is the SMARTer Mobility Program?



Fixed route, Connector and ADA Paratransit, and Community Transit



Combined ridership of nearly 11 million riders annually



Operating 234 Fixed Route buses



47 Routes



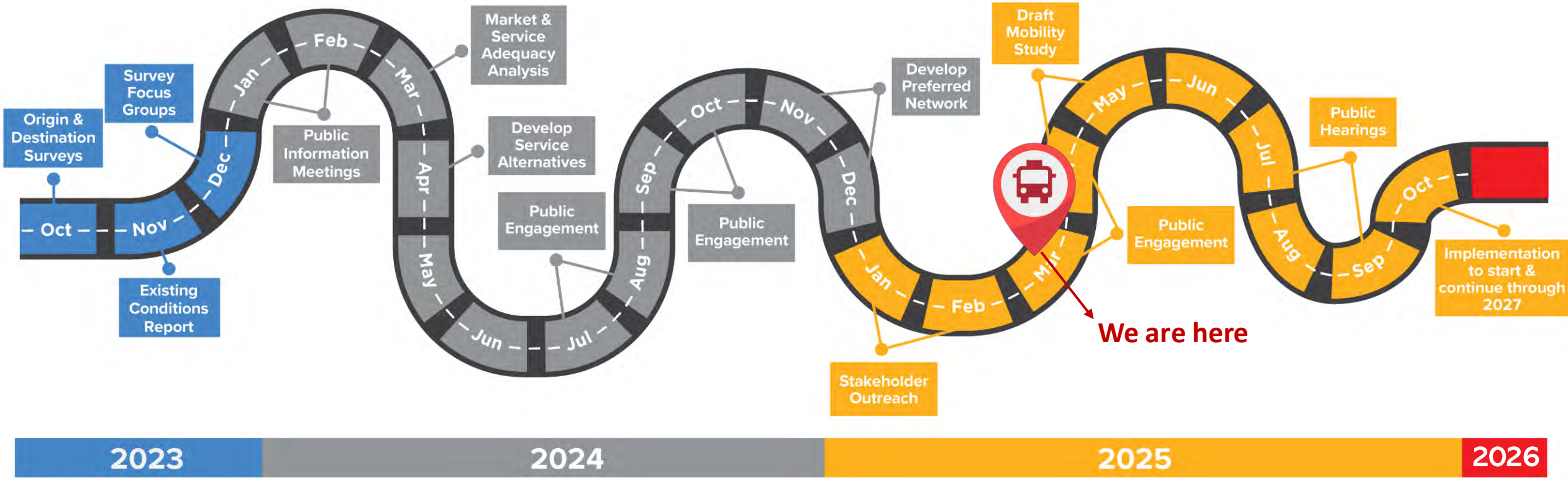
7 days a week, 22 hours a day

- An evaluation of the fixed route, connector general service, and the current micro transit pilot program to aid in the evaluation and analysis of the services within the region
- Recommendations for service design and improvements for overall system efficiency and operational effectiveness
- Extensive community and stakeholder involvement and engagement

 **SMART**



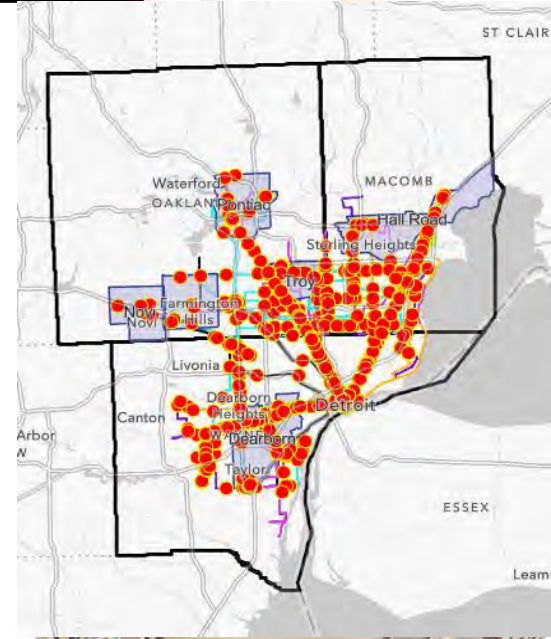
The SMARTer Mobility Program Overview



What is MOST important to riders?



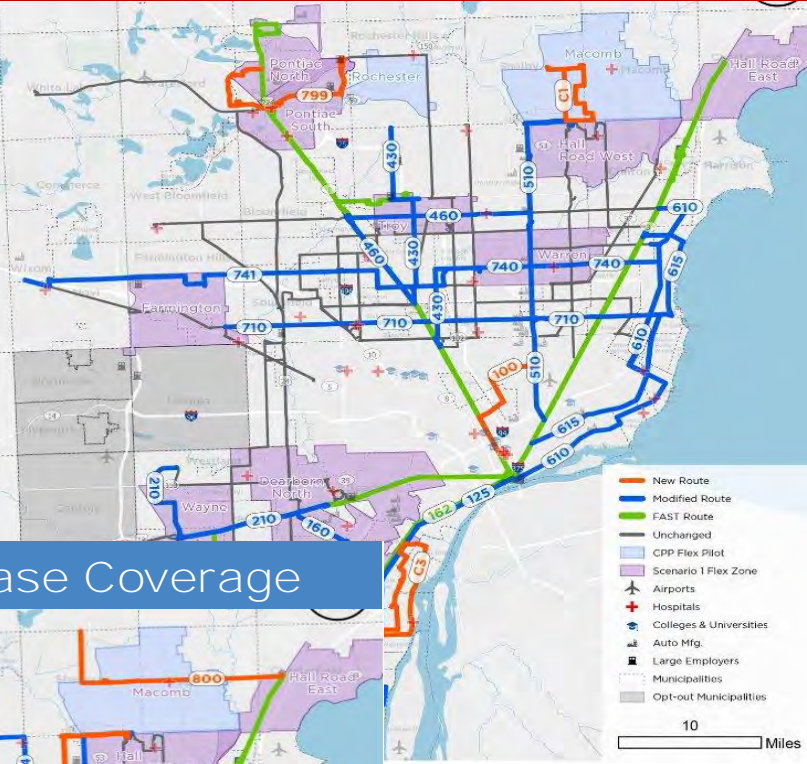
- 1 Reliability
- 2 Amenities
- 3 Frequency
- 4 Customer Service
- 5 Coverage



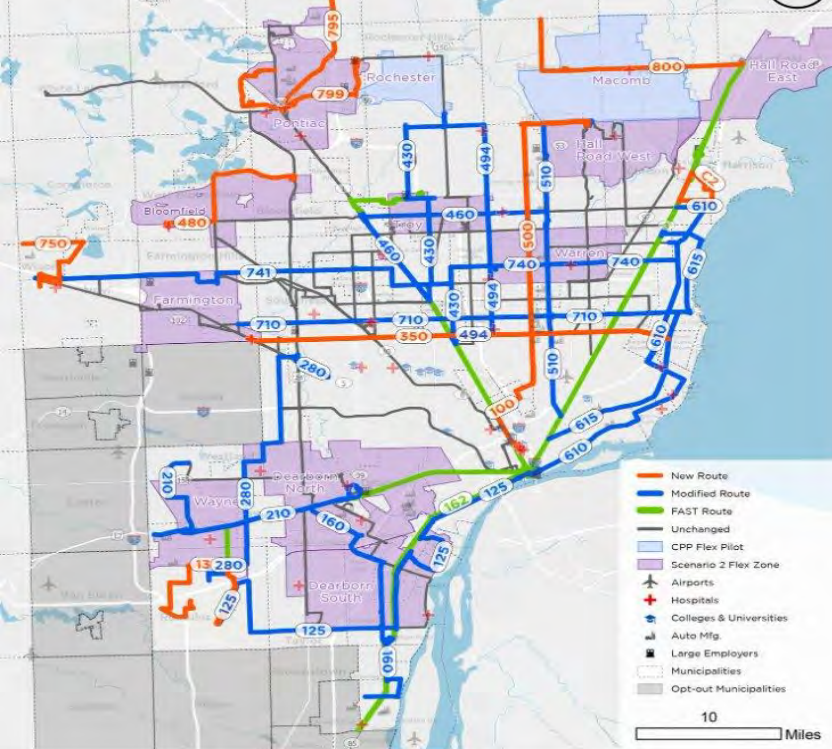
Priorities for Network Improvements



Scenario 1: Improve Frequency



Scenario 2: Increase Coverage



People overwhelmingly supported *improving frequency with additional connections within the current network area.*

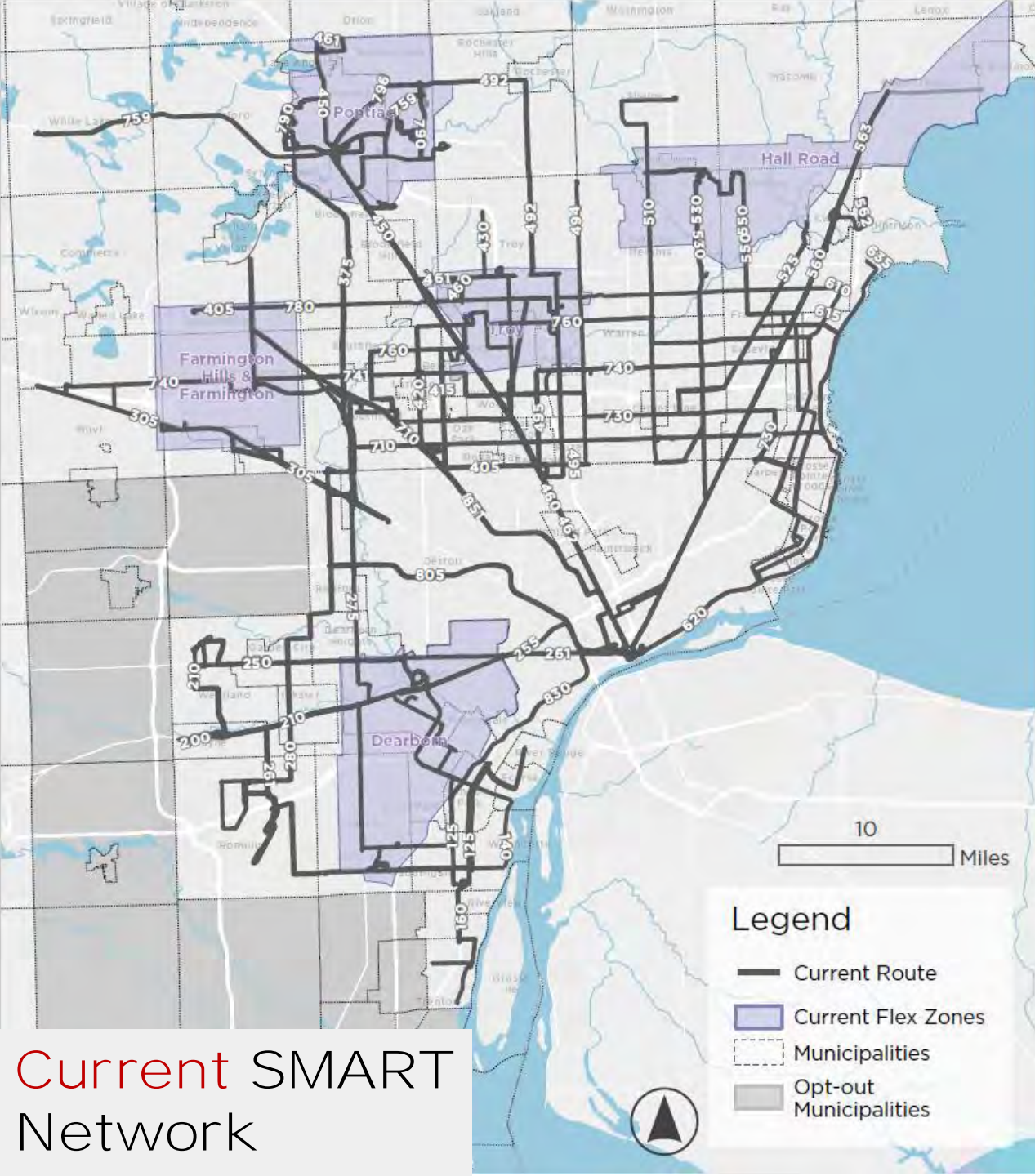


SMARTer NETWORK

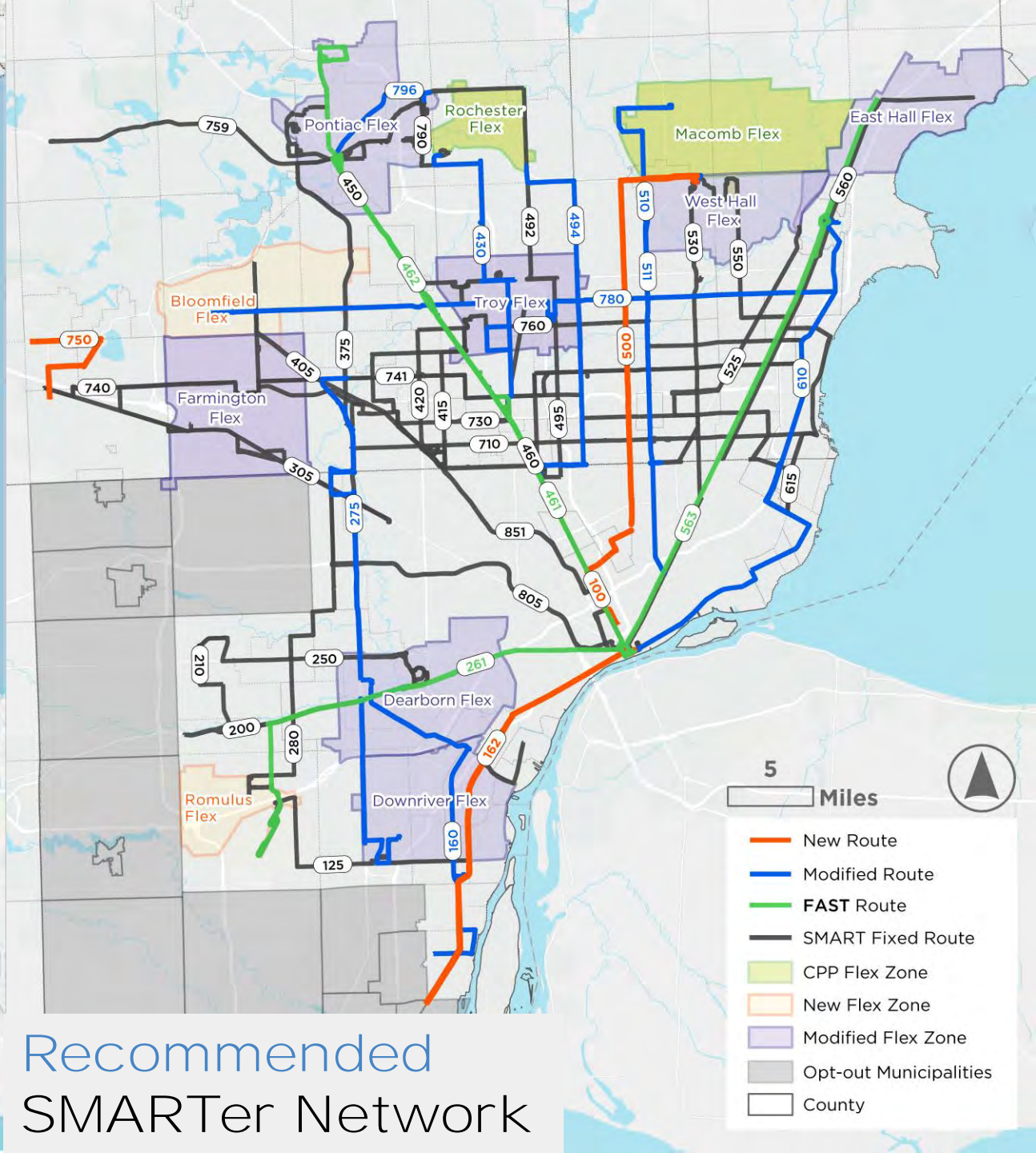
More Connections, More Options, More Reliability.

Every Trip, Every Time.





Current SMART Network



Recommended SMARTer Network

The SMARTer Network offers...



More connections to places you need to go, more often.

- **4** New Routes + **9** Modified Routes
- **79,813** more jobs
- **10,104** more businesses



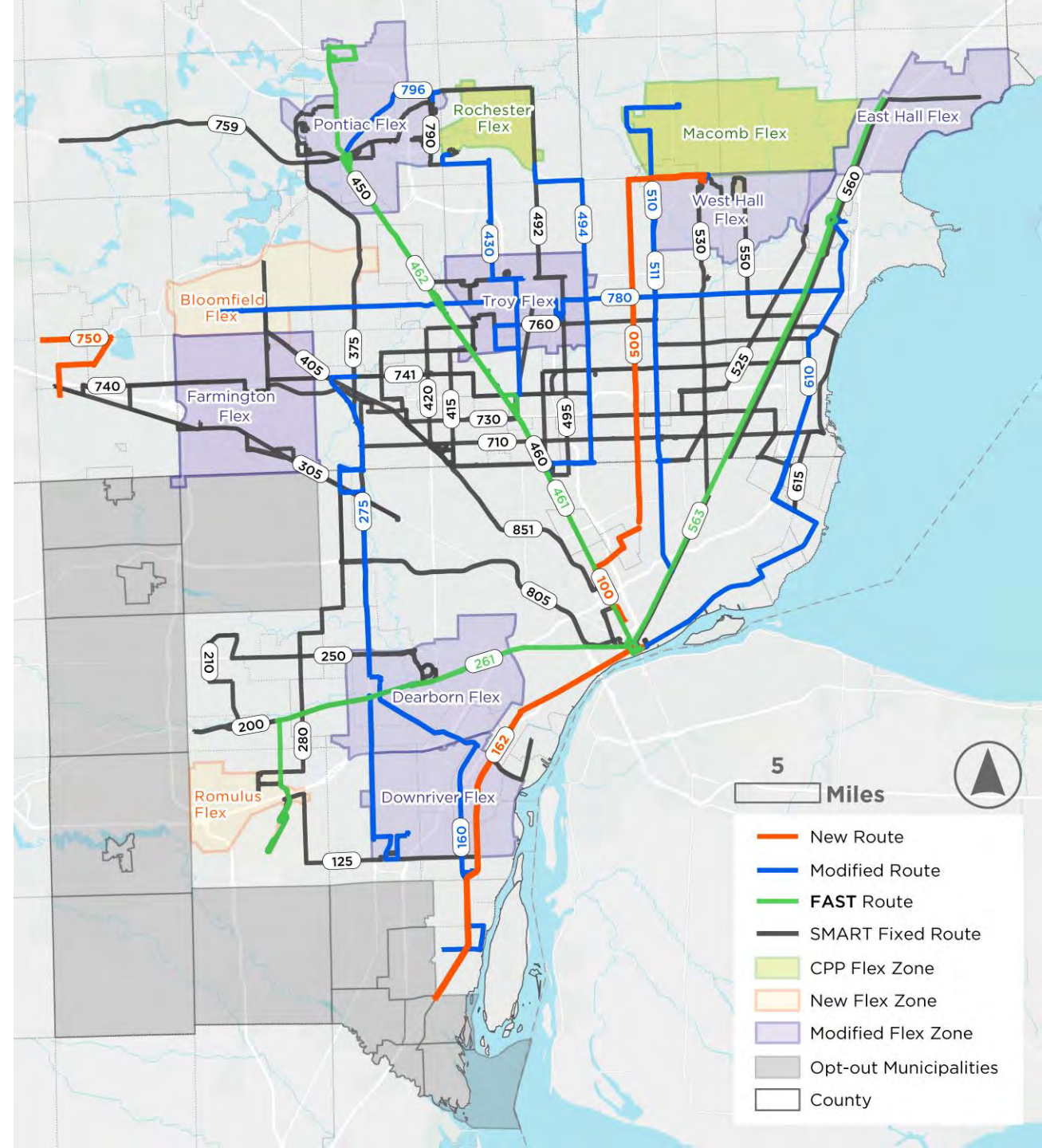
More options for improved mobility-for-all. Use Flex for short trips or as a first-last mile connection to the bus network.

- **11** Flex Zones
- **719,724** more residents have access to Flex or a fixed route



More reliability that your bus will arrive on time, every time.

- Clock-hand timing for more predictable scheduling.
- **17** more bus routes offering daily service
- **16** routes offer **30** minutes or better service



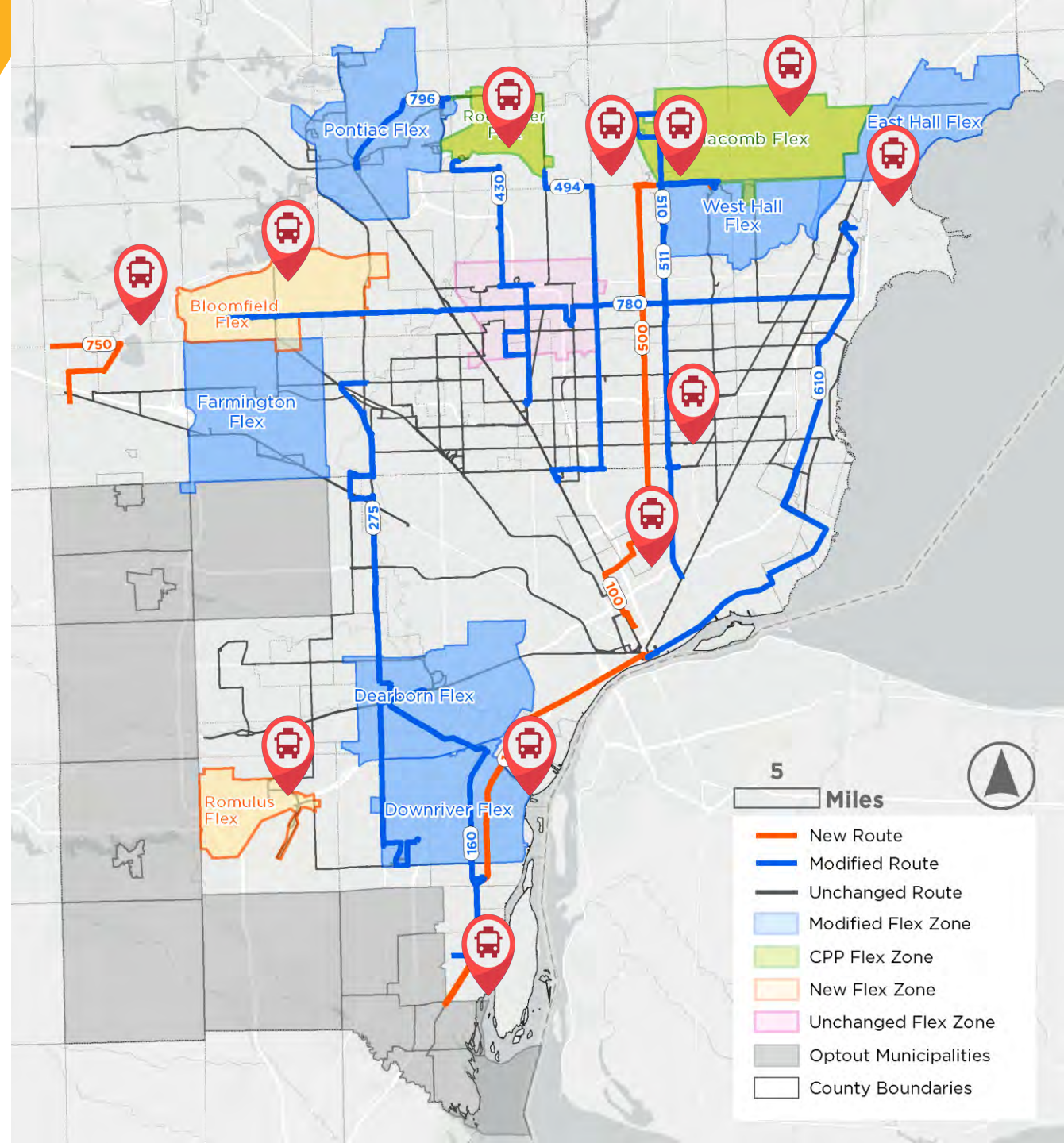
More Connections

to the places people need to go, most often, through a combination of new and modified routes and Flex Zones.

Offering improved connections to places, such as:

Trenton, Downriver, Romulus, Wixom, Bloomfield, Rochester, Hamtramck, Sterling Heights, Warren, Macomb, and Mount Clemens

SMARTer NETWORK
More Connections, More Options, More Reliability.

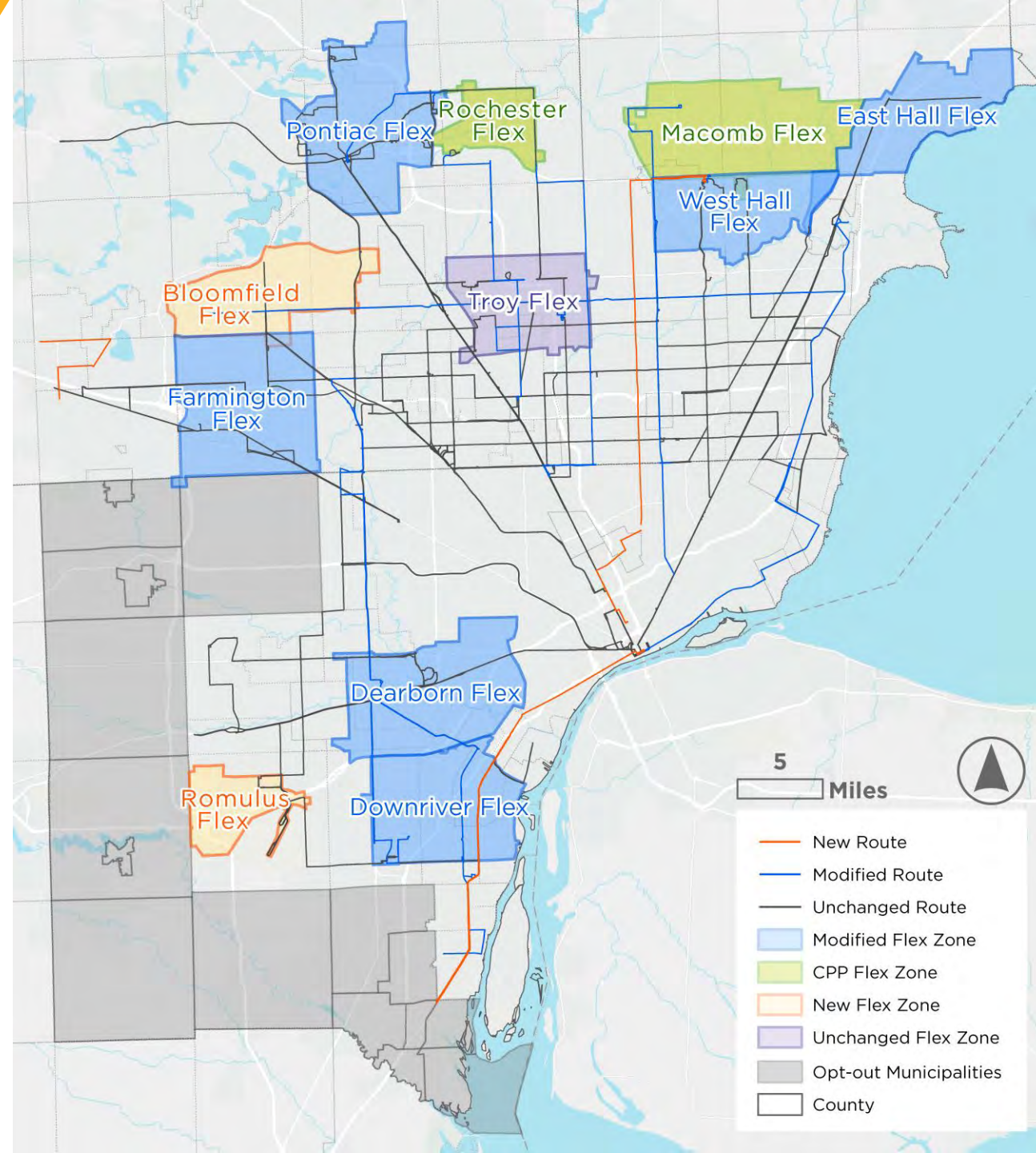


More Options

By providing **more options** that increase mobility for all with more Flex Zones. This offers improved access and opportunities for people to get where they need to go.

Short trip? Ride Flex.

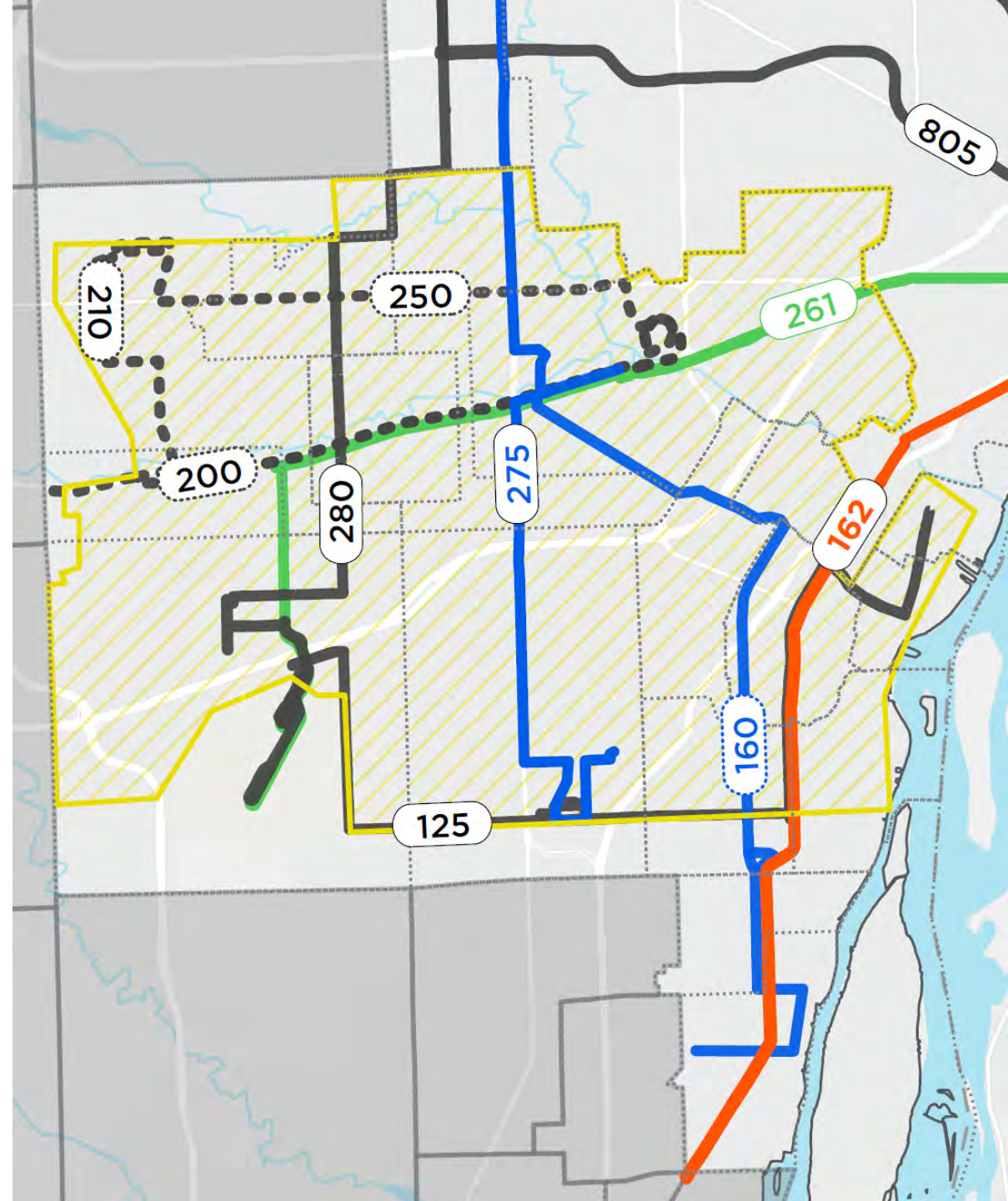
Live or work too far from a fixed bus route? Ride Flex.



More Options

Need a ride home late night? Ride Flex – Late Night *Pilot* Zone

- Operates 10p-2a
- People can take a ride anywhere within the zone
- Connects to SMART routes: 125, 160, 162, 261, 275, and 280
- Local SMART routes to end service at 10p: Routes 200, 210, 250)



SMARTer NETWORK

More Connections, More Options, More Reliability.

More Reliability

By becoming **more reliable** through more predictable scheduling. Count on your bus to show up when it says it will.

How?

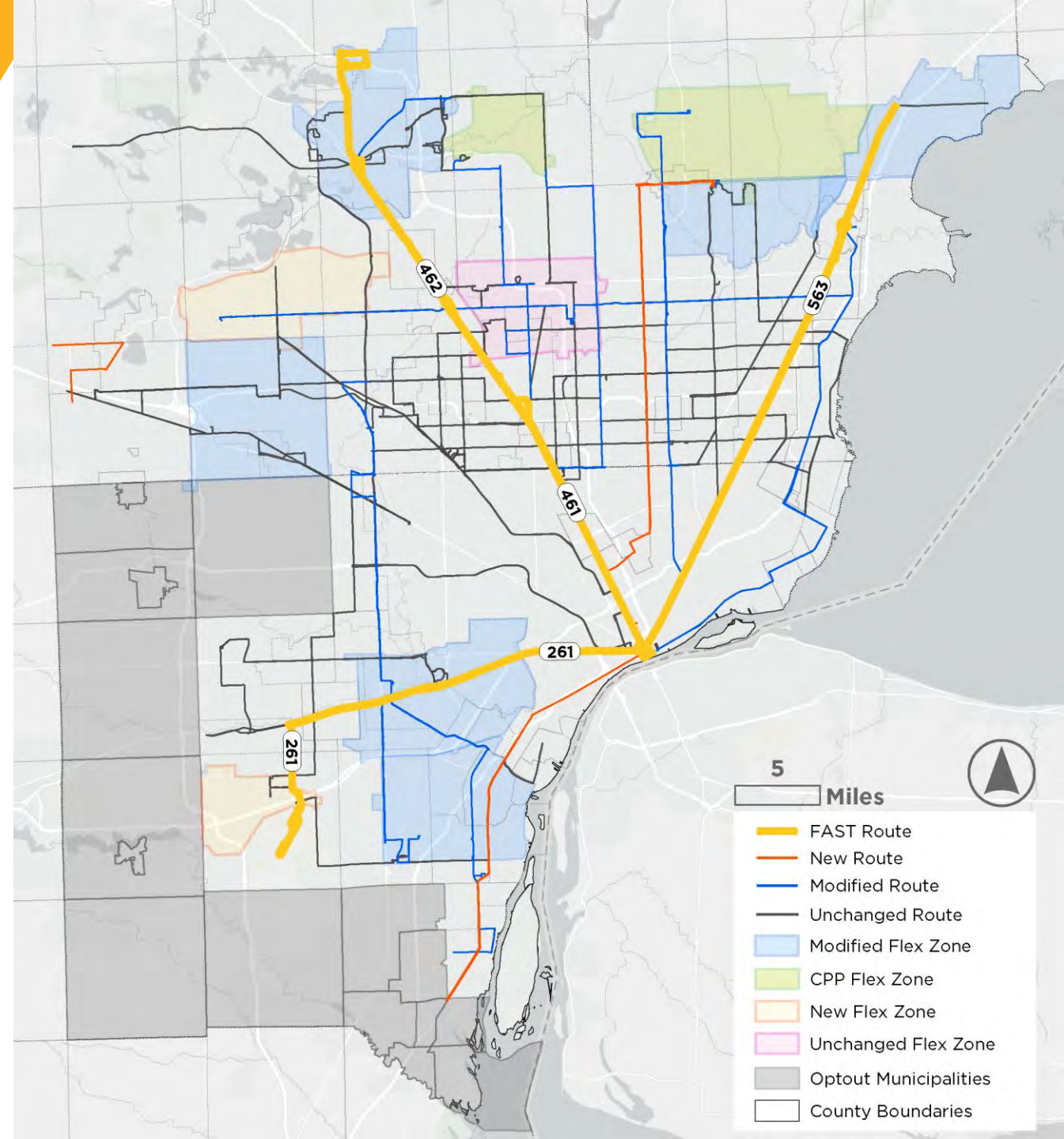
- Clock-hand timing. Your bus will come at the same time, ever hour.
- Better timed layovers. By building in more time for layovers, operators can stay on schedule more often.



More Reliability

By becoming **more reliable** through offering **more frequent service** on the bus routes you take most often.

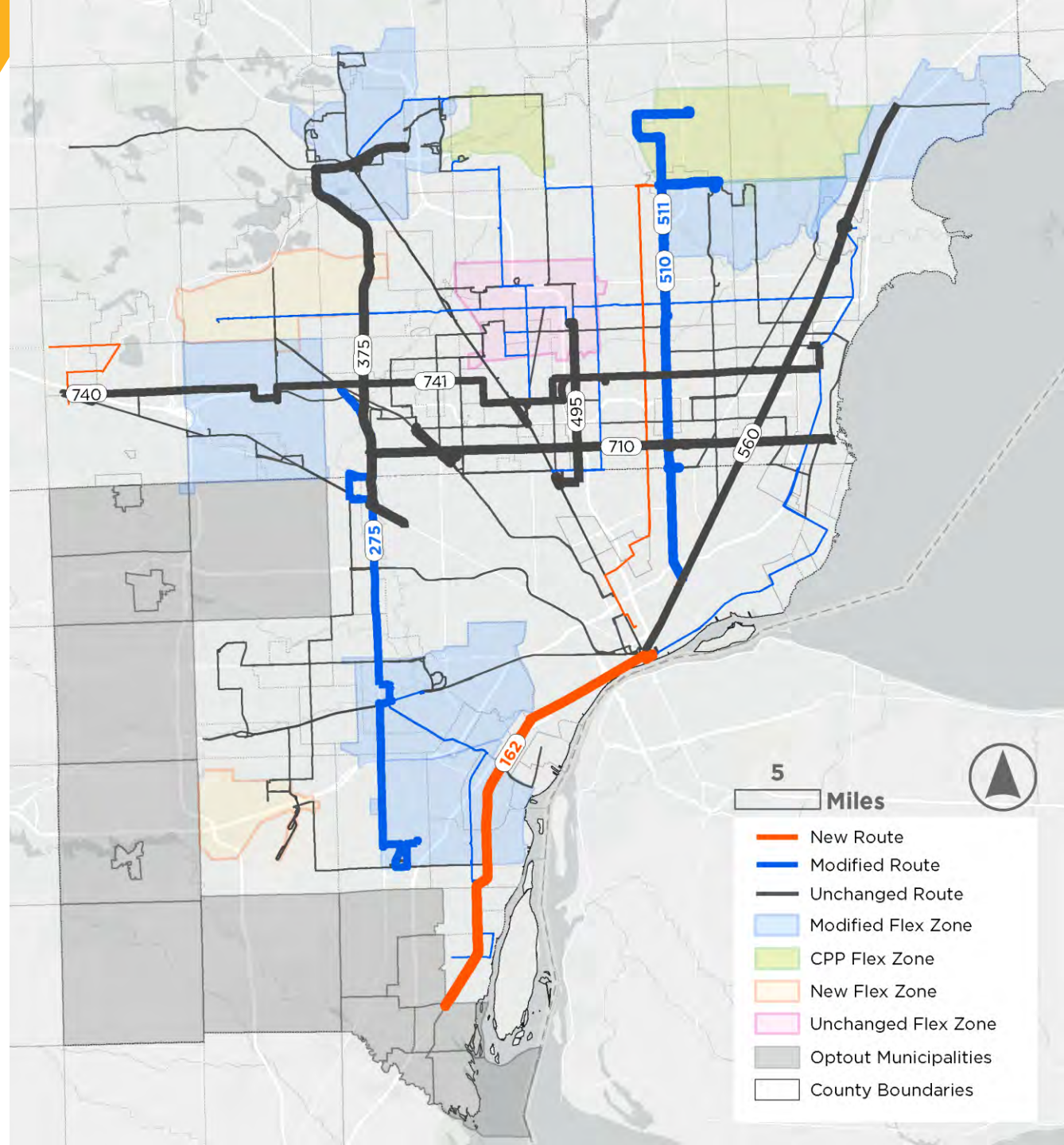
- FAST routes will run every 20 minutes during weekday peak hours (6a-8p) and 30 minutes off-peak and weekends.



More Reliability

By becoming **more reliable** through offering **more frequent service** on the bus routes you take most often.

- FAST routes will run every 20 minutes during weekday peak hours (6a-8p) and 30 minutes off-peak and weekends.
- High ridership routes will run every 30 minutes during weekday peak hours.

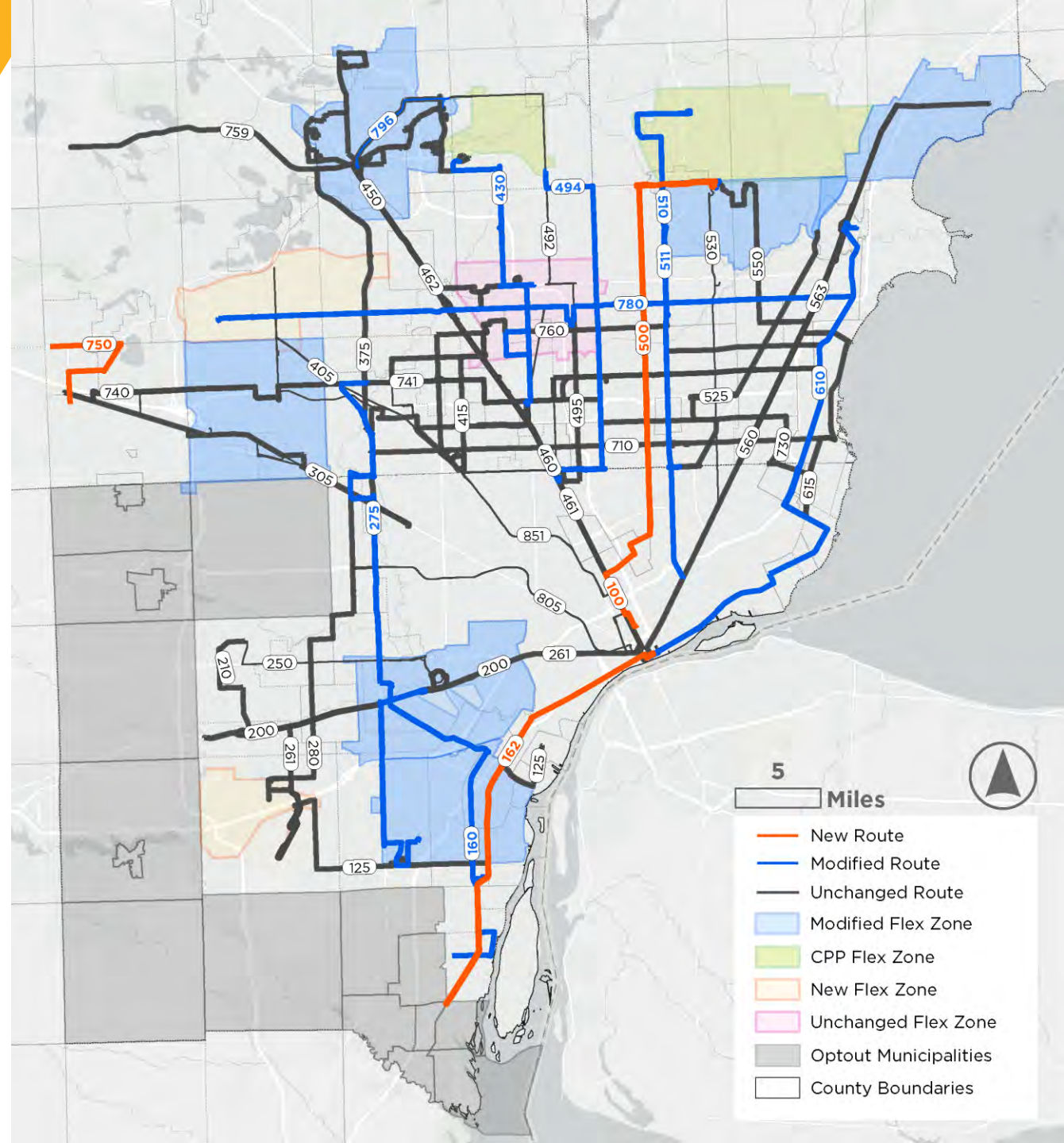


More Reliability

By becoming **more reliable** through offering **daily service** on **MOST** routes.

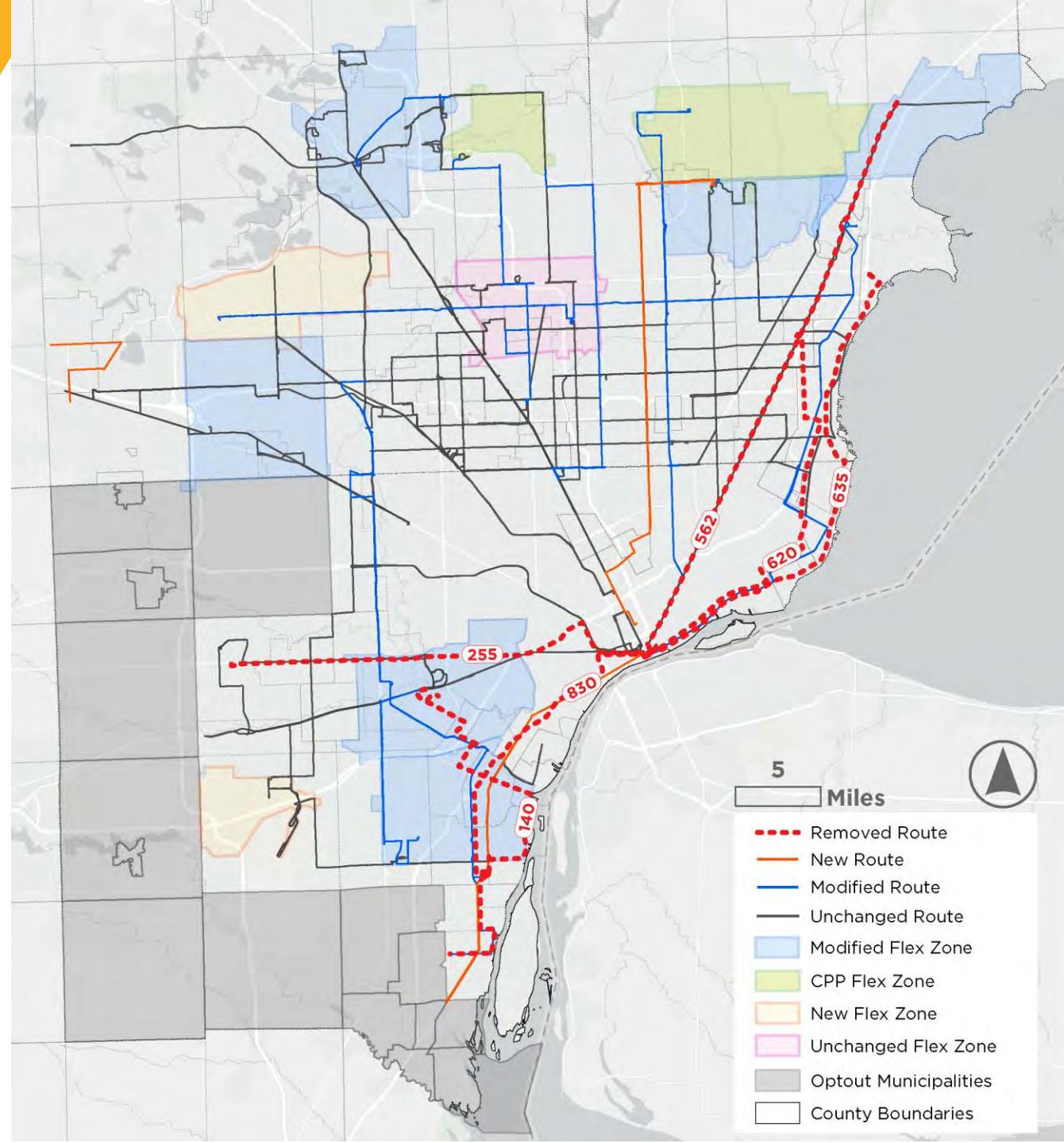
- All but 7 routes will run every day, every week.

(increase from 21 today to 38 in the SMARTer Network)



Removed Routes

- **140 Southshore**
Coverage provided by modified route 160 and/or Dearborn/Downriver Flex Zones
- **255- Ford Rd Express**
Covered by route 250 Ford Rd
- **562- FAST Gratiot Commuter**
Covered by routes 560 Local and 563 FAST
- **620 Charlevoix/635-East Jefferson**
Covered by modified route 610
- **830-Downriver Park And Ride**
Covered by modified route 160 and new route 162



Attend a Meeting!

In-Person Public Meetings

All meetings begin at 5:30pm

Monday, March 31

Mount Clemens Public Library

Tuesday, April 1

Pontiac Public Library

Wednesday, April 2

Henry Ford Centennial Library (Dearborn)

Thursday, April 3

The Hawk – Farmington Hills Community Center

Online Public Meeting at 5:30pm

Thursday, April 10

SMARTer NETWORK
More Connections, More Options, More Reliability.

**The SMARTer
Mobility Program
Draft Network is
ready!**



Join us at an upcoming meeting to view the draft network and tell us your thoughts!

In-Person Meetings

Online Meeting

MAR 31

5:30 PM

Mount Clemens
Public Library

150 Cass Ave, Mt Clemens, MI 48043

APR 1

5:30 PM

Pontiac
Public Library

60 E Pike St #2225, Pontiac, MI 48342

APR 10

5:30 PM

Online Via Zoom
Register at

Smarter-Mobility.org

Registration Required

APR 2

5:30 PM

Henry Ford
Centennial Library

16301 Michigan Ave.
Dearborn, MI 48126

APR 3

5:30 PM

The Hawk
- Farmington Hills
Community Center

29995 W. 12 Mile Rd.
Farmington Hills, MI 48334

Or to join by phone:
call 312-626-6799
and enter Meeting ID:
819 5288 1417

smarter-mobility.org



Give Input Online!

Provide comments online at:
smarter-mobility.org

SMARTer Draft Network

Please choose a route or flex zone to comment on Required

You may take this survey for as many routes or flex zones as you want.

This route connects me to more places

Agree Neither Agree nor Disagree Disagree Reset

The proposed frequency on this route meets my needs

Agree Neither Agree nor Disagree Disagree Reset

The proposed hours of operation for this route meet my needs

Agree Neither Agree nor Disagree Disagree Reset

Please write any additional comments below.

Submit

OR email us at SmarterMobility@smartbus.org

Interactive Map & Survey

How to navigate the map:

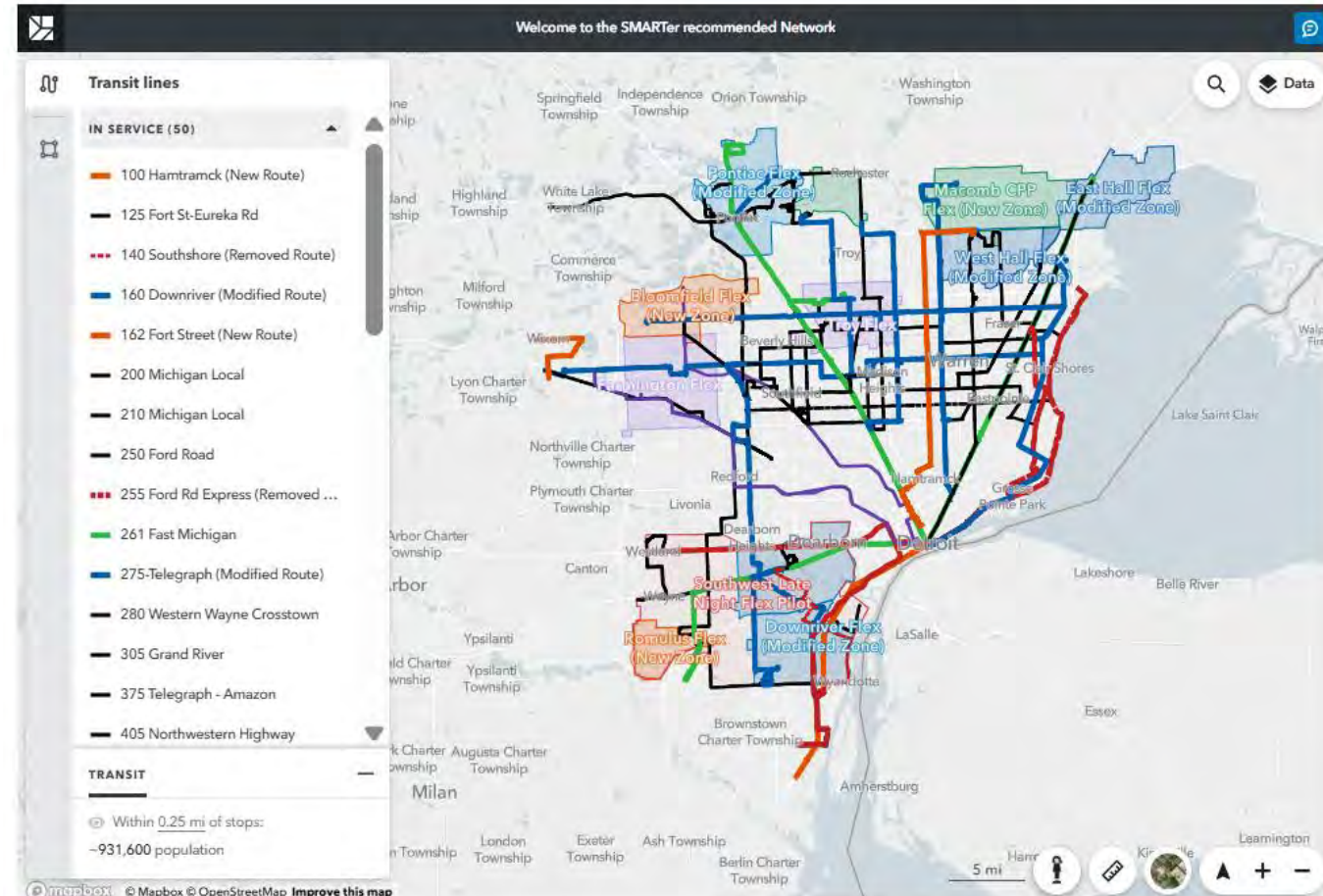
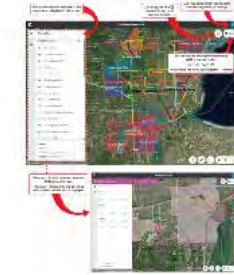
Explore individual routes on the map by clicking on the route name on the left-hand side panel, or by entering the route number or a location into the search bar on the upper right-hand corner of the map.

Providing input on the map:

Click on "Post comment" in the upper right hand corner to provide a comment anywhere on the map. Please don't forget to fill out the survey below the map as well!

Learn how to use the map!

How to use the map:

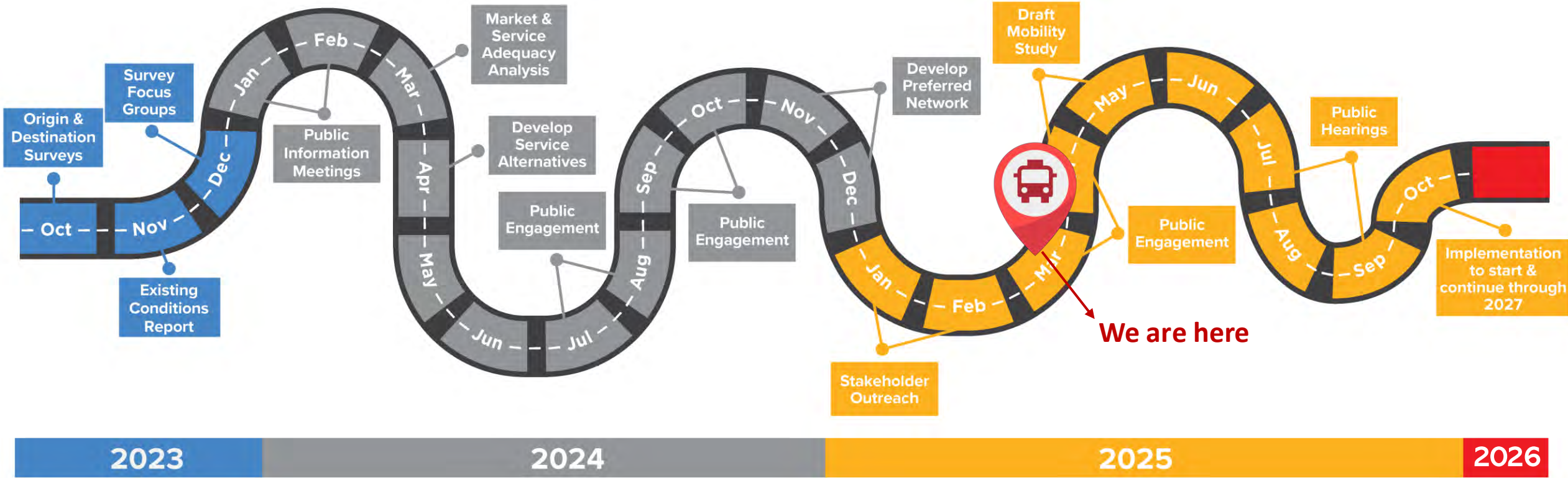


Open

SMARTer Draft Network

If you are having trouble viewing the map, you can open a full screen version [here](#)

The SMARTer Mobility Program:: Next Steps



SMARTer NETWORK

More Connections, More Options, More Reliability.

Every Trip, Every Time.

Questions?

